

Top chord 2x4 SPF 1650f-1.5E
 Bot chord 2x4 SPF 1650f-1.5E
 Webs 2x4 SPF 1650f-1.5E

In lieu of structural panels or rigid ceiling use purlins to laterally brace chords as follows:

CHORD	SPACING(IN OC)	START(FT)	END(FT)
BC	120	0.14	19.86

Apply purlins to any chords above or below fillers at 24" OC unless shown otherwise above.

MWFERS loads based on trusses located at least 7.50 ft. from roof edge.

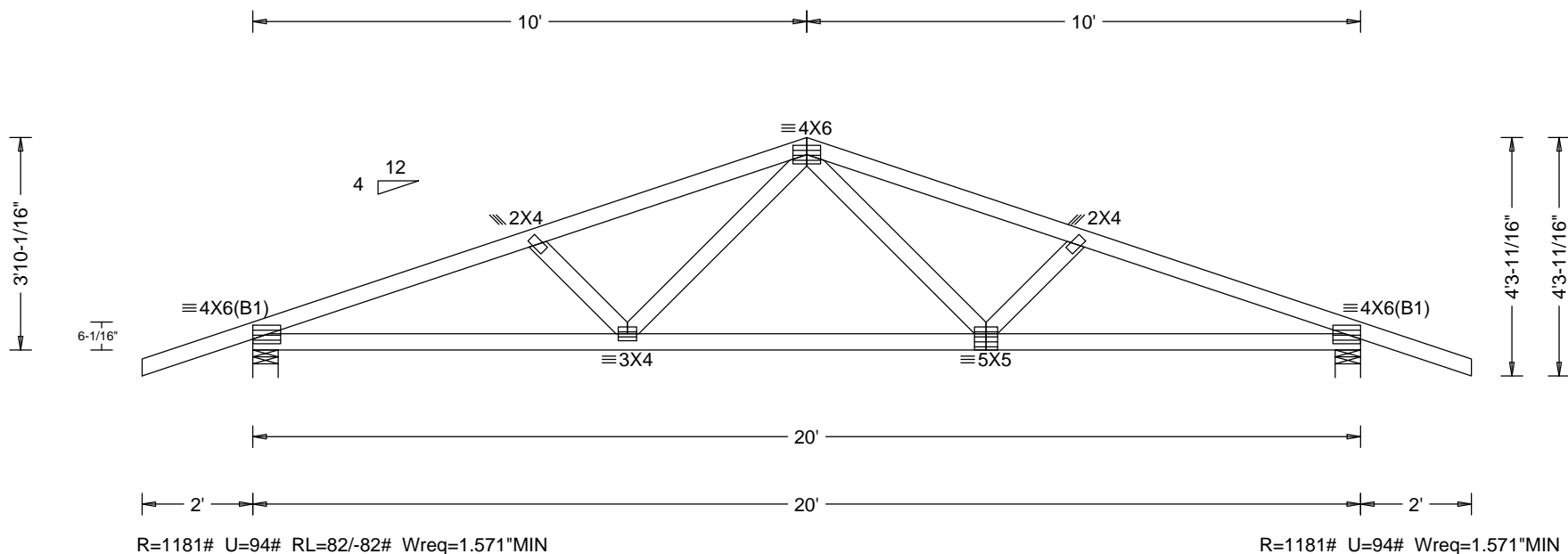
115 mph wind, 15.00 ft mean hgt, ASCE 7-10, CLOSED bldg, not located within 9.00 ft from roof edge, RISK CAT II, EXP C, wind TC DL=5.0 psf, wind BC DL=5.0 psf.

Wind loads and reactions based on MWFERS with additional C&C member design.

Deflection meets L/360 live and L/240 total load. Creep increase factor for dead load is 1.50.

Truss designed for unbalanced snow load based on Pg=30.00 psf, Ct=1.00, Ce=1.00, CAT II & Pf=21.00 psf.

Handling stresses not considered for plates. Handling of this truss requires special care by truss manufacturer and installation contractor to prevent plate damage.



DESC. = T1 20' Common
 PLT. TYP.-WAVE

DESIGN CRIT=IBC2012/TPI-2007 FT/RT/PT=20%(0%)/ 0(0)/ 1(0)

QTY= 11 TOTAL= 11

REV. 15.01.00A.0312.21

SEQ = 8200
 SCALE =0.3170



TC LL	30.0psf	REF	
TC DL	10.0psf	DATE	07-10-2015
BC DL	10.0psf	DRWG	
BC LL	0.0psf		BJR
TOT.LD.	50.0psf	O/A LEN.	20
DUR.FAC.	1.15	JOB #:	BJR-Default
SPACING	24.0"	TYPE	COMN