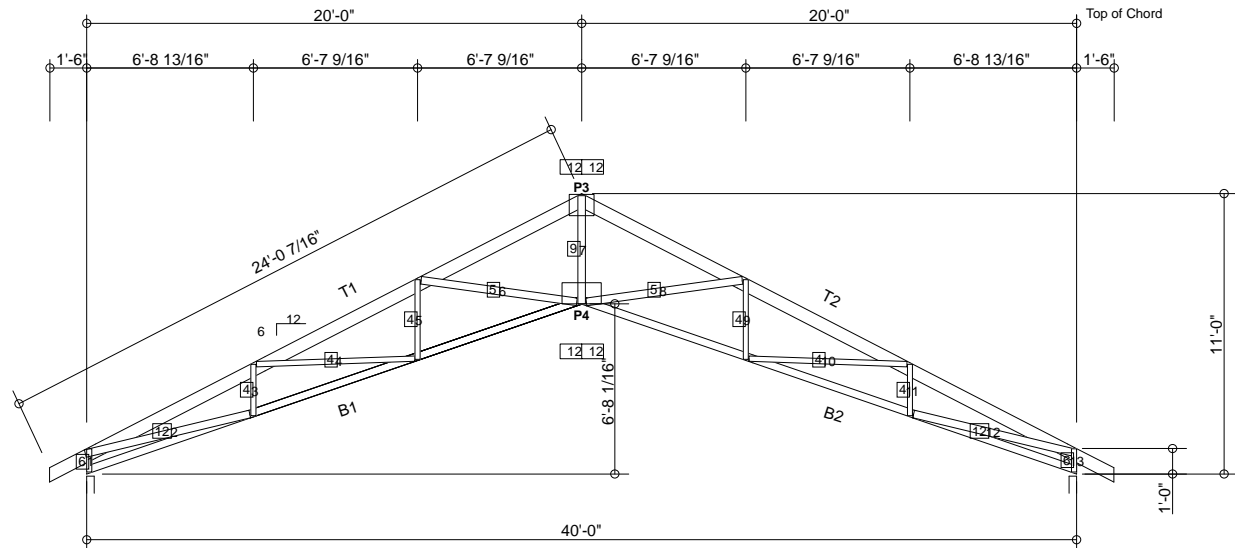
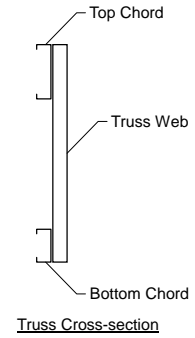


MATERIAL CUT LIST	Material	Unit/Length	Quantity
Metal Screw	#12 Drivall	0	2190
Metal Screw	#10 Drivall	0	50
Connector (P3)	PL12x10x0.102	0	10
Connector (P4)	PL19x10x0.102	0	10
Simpson	VPA2	0	20
B1	362S162-68(50)	21'-2 3/16"	10
B2	362S162-68(50)	21'-2 3/16"	10
T1	600S162-68(50)	24'-3 7/16"	10
T2	600S162-68(50)	24'-3 7/16"	10
Web #1 13	250S162-54(50)	10 15/16"	20
Web #2 12	362S162-97(50)	6'-9 7/8"	20
Web #3 11	250S162-54(50)	2'-0 3/16"	20
Web #4 10	250S162-54(50)	6'-4 5/8"	20
Web #5 9	250S162-54(50)	3'-1 7/16"	20
Web #6 8	362S162-54(50)	6'-4 1/4"	20
Web #7	362S162-97(50)	4'-2 7/8"	10

GENERAL NOTES

- Number of fasteners noted in chart installed on each end of Web
- When connecting plates to chord or web members, fasteners must pass through the plate and member. If a joint connection has fasteners passing through the web, connector plate and chord, the fastener may be counted as part of the required number of fasteners for that joint.
- Minimum connector spacing (center to center or free edge) = 3/4"
- Truss connector type - #12 Drivall (Grabber)

Number of Trusses = 10 each
Chord Cut Type = Mitre Cut
Truss Spacing = 2'-0"
Number of Plys = 1
Weight per Truss = 291.3 lbs (per ply)



2 denotes number of fasteners @ each end of member (web or chord)
4 4 denotes number of chord-plate fasteners

Scale: 1/8" = 1'-0"



Rusk Component and Design

11357 Billings Ave
Lafayette, CO 80026
(303) 828-5747

Roof Trusses

Lafayette, Co

Truss D&E, V25.011
Date: 04-24-2015
Time: 08:21
Designer: BJR
File: S-63-40
Job Number: RoofTruss

This document contains information proprietary to Rusk Component and Design and may not be used or reproduced without prior written consent. Contents subject to change without notice.

S-63-40

Fabrication Drawing