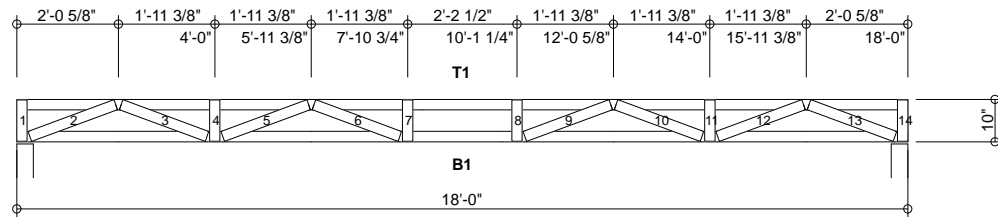
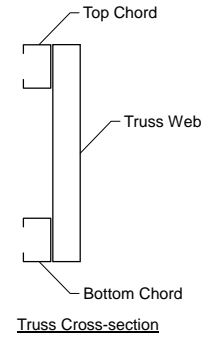


MATERIAL CUT LIST	Material	Unit/Length	Quantity	Screws
Metal Screw	#12 Drivall	0	1194	
Metal Screw	#10 Drivall	0	60	
Simpson	S/H1	0	20	
B1	250S162-68(50)	18'-0"	10	
T1	250S162-68(50)	18'-0"	10	
Web #1	250S162-68(50)	9 3/4"	10	4
Web #2	250S162-68(50)	1'-10 1/8"	10	5
Web #3	250S162-68(50)	1'-10 1/8"	10	4
Web #4	250S162-68(50)	9 3/4"	10	4
Web #5	250S162-68(50)	1'-10 1/8"	10	4
Web #6	250S162-68(50)	1'-10 1/8"	10	4
Web #7	250S162-68(50)	9 3/4"	10	4
Web #8	250S162-68(50)	9 3/4"	10	4
Web #9	250S162-68(50)	1'-10 1/8"	10	4
Web #10	250S162-68(50)	1'-10 1/8"	10	4
Web #11	250S162-68(50)	9 3/4"	10	4
Web #12	250S162-68(50)	1'-10 1/8"	10	4
Web #13	250S162-68(50)	1'-10 1/8"	10	5
Web #14	250S162-68(50)	9 3/4"	10	4
B_Chld Lateral Brace	250S162-33(33)	18'-3"	1	
B_Chld Diagonal Brace	250S162-33(33)	9'-0 1/16"	6	

### GENERAL NOTES

- Number of fasteners noted in chart installed on each end of Web
- When connecting plates to chord or web members, fasteners must pass through the plate and member. If a joint connection has fasteners passing through the web, connector plate and chord, the fastener may be counted as part of the required number of fasteners for that joint.
- Minimum connector spacing (center to center or free edge) = 3/4"
- Truss connector type - #12 Drivall (Grabber)

Number of Trusses = 10 each
Chord Cut Type = Square Cut
Truss Spacing = 2'-0"
Number of Plys = 1
Weight per Truss = 83.8 lbs (per ply)



4 4 denotes number of chord-plate fasteners

Scale: 1/4" = 1'-0"



### Rusk Component and Design

11357 Billings Ave  
Lafayette, CO 80026  
(303) 828-5747

### Floor Truss

Lafayette, CO

Truss D&E, V23.05  
Date: 10-18-2013  
Time: 09:23  
Designer: BJR  
File: FT10-24-18  
Job Number: Floor-Truss

This document contains information proprietary to Rusk Component and Design and may not be used or reproduced without prior written consent. Contents subject to change without notice.

FT10-24-18

Frame Fabrication Dwg