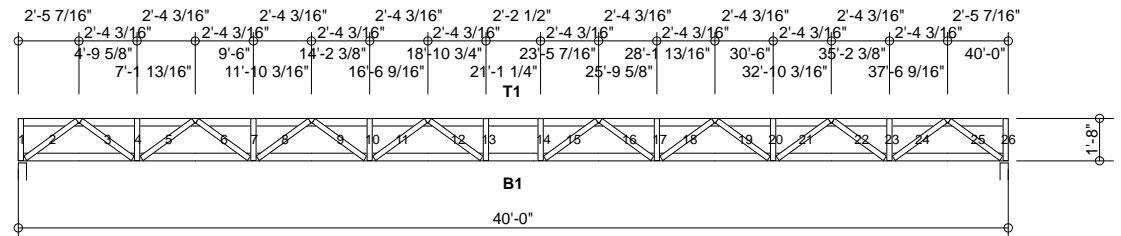
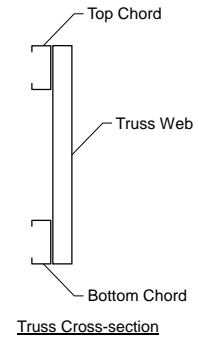


MATERIAL CUT LIST	Material	Unit/Length	Quantity	Screws
Metal Screw	#12 Drivall	0	2685	
Metal Screw	#10 Drivall	0	60	
Simpson	S/H1	0	20	
B1	362S162-97(50)	40'-0"	10	
T1	362S162-97(50)	40'-0"	10	
Web #1	250S162-54(50)	1'-7 3/4"	10	4
Web #2	250S162-54(50)	2'-6 11/16"	10	9
Web #3	250S162-54(50)	2'-6 11/16"	10	8
Web #4	250S162-54(50)	1'-7 3/4"	10	4
Web #5	250S162-54(50)	2'-6 11/16"	10	6
Web #6	250S162-54(50)	2'-6 11/16"	10	6
Web #7	250S162-54(50)	1'-7 3/4"	10	4
Web #8	250S162-54(50)	2'-6 11/16"	10	4
Web #9	250S162-54(50)	2'-6 11/16"	10	4
Web #10	250S162-54(50)	1'-7 3/4"	10	4
Web #11	250S162-54(50)	2'-6 11/16"	10	4
Web #12	250S162-54(50)	2'-6 11/16"	10	4
Web #13	250S162-54(50)	1'-7 3/4"	10	4
Web #14	250S162-54(50)	1'-7 3/4"	10	4
Web #15	250S162-54(50)	2'-6 11/16"	10	4
Web #16	250S162-54(50)	2'-6 11/16"	10	4
Web #17	250S162-54(50)	1'-7 3/4"	10	4
Web #18	250S162-54(50)	2'-6 11/16"	10	4
Web #19	250S162-54(50)	2'-6 11/16"	10	4
Web #20	250S162-54(50)	1'-7 3/4"	10	4
Web #21	250S162-54(50)	2'-6 11/16"	10	6
Web #22	250S162-54(50)	2'-6 11/16"	10	6
Web #23	250S162-54(50)	1'-7 3/4"	10	4
Web #24	250S162-54(50)	2'-6 11/16"	10	8
Web #25	250S162-54(50)	2'-6 11/16"	10	9
Web #26	250S162-54(50)	1'-7 3/4"	10	4
B_Chdl Lateral Brace	250S162-33(33)	12'-2 5/8"	4	
B_Chdl Diagonal Brace	250S162-33(33)	8'-1 1/2"	15	

GENERAL NOTES

- Number of fasteners noted in chart installed on each end of Web
- When connecting plates to chord or web members, fasteners must pass through the plate and member. If a joint connection has fasteners passing through the web, connector plate and chord, the fastener may be counted as part of the required number of fasteners for that joint.
- Minimum connector spacing (center to center or free edge) = 3/4"
- Truss connector type - #12 Drivall (Grabber)

Number of Trusses = 10 each
Chord Cut Type = Square Cut
Truss Spacing = 1'-3 15/16"
Number of Plys = 1
Weight per Truss = 268.3 lbs (per ply)



4 4 denotes number of chord-plate fasteners

Scale: 1/8" = 1'-0"



Rusk Component and Design

11357 Billings Ave
Lafayette, CO 80026
(303) 828-5747

Floor Truss

Lafayette, CO

Truss D&E, V23.05
Date: 10-28-2013
Time: 15:41
Designer: BJR
File: FT20-16-40
Job Number: Floor-Truss

This document contains information proprietary to Rusk Component and Design and may not be used or reproduced without prior written consent. Contents subject to change without notice.

FT20-16-40

Frame Fabrication Dwg