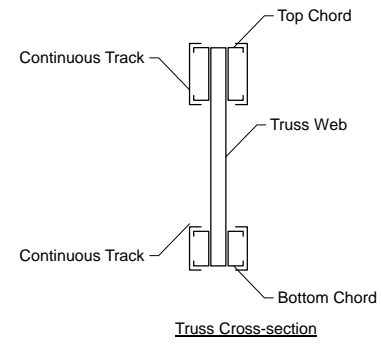


MATERIAL CUT LIST	Material	Unit/Length	Quantity
Hilti	EDNI 19P8	0	40
Metal Screw	#10 Drivall	0	7570
Clip Angle 1	L-2x3x3x0.12	0	20
B1	362S162-97(50)	32'-11 3/4"	20
T1	550S162-97(50)	36'-0"	20
BC Track #B1	362T125-96(50)	32'-11 3/4"	20
TC Track #T1	550T125-96(50)	36'-0"	20
Web #1 16	600S162-97(50)	1'-11 1/2"	20
Web #2 15	362S162-97(50)	2'-4 3/8"	20
Web #3 14	362S162-97(50)	2'-4 3/8"	20
Web #4 13	362S162-97(50)	2'-4 3/8"	20
Web #5 12	362S162-97(50)	2'-4 3/8"	20
Web #6 11	362S162-97(50)	2'-4 3/8"	20
Web #7 10	362S162-97(50)	2'-4 3/8"	20
Web #8 9	362S162-97(50)	2'-4 3/8"	20
Web T-Brace #2	362S162-97(50)	2'-4 3/8"	10
Web T-Brace #3	362S162-97(50)	2'-4 3/8"	10
Web T-Brace #4	362S162-97(50)	2'-4 3/8"	10
Web T-Brace #13	362S162-97(50)	2'-4 3/8"	10
Web T-Brace #14	362S162-97(50)	2'-4 3/8"	10
Web T-Brace #15	362S162-97(50)	2'-4 3/8"	10
B_Chld Lateral Brace	250S162-54(50)	20'-3"	24
B_Chld Diagonal Brace	250S162-54(50)	7'-11 1/16"	45

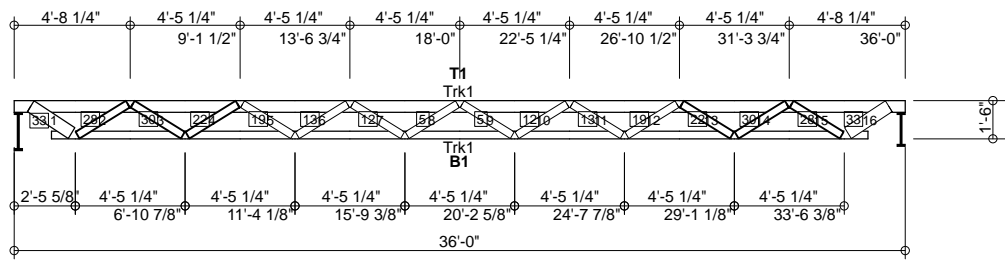
GENERAL NOTES

- Number of fasteners noted in chart installed on each end of Web
- When connecting plates to chord or web members, fasteners must pass through the plate and member. If a joint connection has fasteners passing through the web, connector plate and chord, the fastener may be counted as part of the required number of fasteners for that joint.
- Minimum connector spacing (center to center or free edge) = 5/8"
- Truss connector type - #10 Drivall (Grabber)

Number of Trusses = 10 each
Chord Cut Type = Square Cut
Truss Spacing = 6'-0"
Number of Plys = 1
Weight per Truss = 831.4 lbs (per ply)



Support	Connector Type	Qty	Fastener Chord	Qty	Fastener Support	Qty
Left	L-2x3x3x0.12	1	#10 Drivall	2	EDNI 19P8	2
Right	L-2x3x3x0.12	1	#10 Drivall	2	EDNI 19P8	2



| denotes Web + T-Brace
 = denotes Added Track
 [2] denotes number of fasteners @ each end of member (web or chord)
 [4] [4] denotes number of chord-plate fasteners

Scale: 1/8" = 1'-0"



Rusk Component and Design
 11357 Billings Ave
 Lafayette, CO 80026
 (303) 828-5747

Bar Joist Equivalent
 Lafayette, CO

Truss D&E, V23.05
 Date: 10-11-2013
 Time: 14:23
 Designer: BJR
 File: BJL18-72-36
 Job Number: BarJoist

This document contains information proprietary to Rusk Component and Design and may not be used or reproduced without prior written consent. Contents subject to change without notice.

BJL18-72-36

Frame Fabrication Dwg