

Connection	Section	Length	Axial	Int.	Fastener	Pa	Req.
BC #1	250S162-68(50)	27.70	5.27C	0.63	#10 Drivall	0.000	0
TC #1	550S162-68(50)	27.70	29.34C	0.78	#10 Drivall	0.000	0
Web # 1 18	362S162-97(50)+T	1.63	9.82T	0.64	#10 Drivall	0.444	23
Web # 2 17	362S162-97(50)	1.68	7.56T	0.85	#10 Drivall	0.444	18
Web # 3 16	362S162-97(50)	1.68	8.45C	0.62	#10 Drivall	0.444	20
Web # 4 15	362S162-97(50)	1.68	6.79T	0.77	#10 Drivall	0.444	16
Web # 5 14	250S162-68(50)	1.67	5.92C	0.82	#10 Drivall	0.444	14
Web # 6 13	250S162-68(50)	1.67	4.17T	0.87	#10 Drivall	0.444	10
Web # 7 12	250S162-68(50)	1.67	3.85C	0.53	#10 Drivall	0.444	9
Web # 8 11	250S162-68(50)	1.67	2.28T	0.48	#10 Drivall	0.444	6
Web # 9 10	250S162-68(50)	1.67	1.84C	0.25	#10 Drivall	0.444	5
BC Lateral Brace	250S162-54(50)	6.00	0.47C	0.24	#10 Drivall	0.461	2
BC Diagonal Brace	250S162-54(50)	8.21	0.64C	0.51	#10 Drivall	0.461	2

Connection	Simpson	each	Load	Uplift/Shear	Fastener	Pa	Req.
Truss Chord	L-2x3x3x0.12	1	0.51		#10 Drivall	0.444	4
Steel Beam				0.51	EDNI 19P8	0.455	2
Truss Chord	L-2x3x3x0.12	1	0.51		#10 Drivall	0.444	4
Steel Beam				0.51	EDNI 19P8	0.455	2

GENERAL NOTES

- Trusses require lateral bracing. See Truss Layout and Detail sheets.
- Top Chord continuously sheathed.
- Number of fasteners noted in chart installed on each end of Web
- Allowable fastener values based on LGSEA Research Note No. 1-00 and Grabber Chart.
- (ws) denotes web stiffener required at support.
- Member design based on sections in RCD-BarJoist Library.

Maximum Deflections

Vertical	1.001 in (L / 336)
Horizontal	0.114 in
Vertical	0.359 in (L / 937) [Dead Load Only]
Vertical	0.639 in (L / 526) [Live Load Only]

Support Reactions

Support Reactions	Down	Uplift*	Horizontal	Bearing
Left	5.11 {5.11}	-0.51 [-1.58]	0.00	4.00
Right	5.11 {5.11}	-0.51 [-1.58]	0.00	4.00

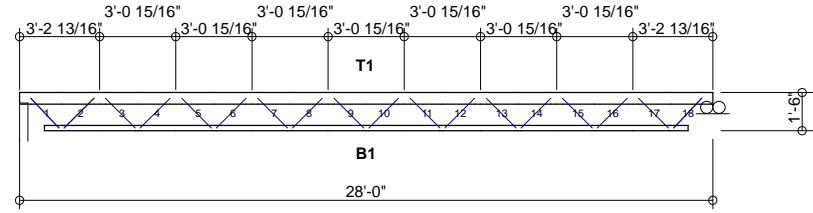
* Uplift Load Combination (Truss to Support Connection Only): 0.6Dead + 1.0Wind

{ } Denotes 'Dead+Live Only'

[] Denotes 'Wind Only' Uplift Reaction

DESIGN DATA

Number of Trusses = 10 each
 Plate Style : Out-Of-Plane
 Eave Height : 10.00 ft (top of wall)
 Bearing : 4 in
 Spacing : 6.00 ft
 Dead Load : 10.00 psf (top chord)
 Dead Load : 10.00 psf (bottom chord)
 Live Load : 40.00 psf (top chord)
 Live Load : 0.00 psf (bottom chord)
 Snow Load : 43.00 psf (ground)
 Snow Load : 30.10 psf (design) [Is =1.00, Ce = 1.00]
 Wind Load : 14.96 psf (design) [Iw = 1.00]
 Wind Speed : 90 mph (Exposure C)
 Open Category: E
 Topography (Kz):1
 Building Category: (2) General
 Seismic Coefficient: 0.044



= denotes Added Track

Per AISI S100-2007		Actual			Allowable			Ratio
Member	Section	Po	Vo	Mo	Pa	Va	Ma	
Bottom Chord	2-250S162-68(50)	5.27T	5.40	13.42	59.12	11.60	31.45	0.63
Top Chord	2-550S162-68(50)	29.34C	0.00	19.14	49.77	21.22	101.24	0.78
Web	1-362S162-97(50)	0.84T	0.00	7.29	41.03	12.06	8.72	0.64

International Building Code 2009: PASSED
 Design Method - (ASD)
 Component Wind Pressure Design (End)



Rusk Component and Design
 11357 Billings Ave
 Lafayette, CO 80026
 (303) 828-5747

Bar Joist Equivalent

Lafayette, CO

Truss D&E, V23.05
 Date: 10-11-2013
 Time: 13:52
 Designer: BJR
 File: BJL18-72-28
 Job Number: BarJoist

BJL18-72-28