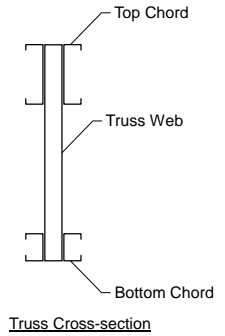


Material CUT LIST	Material	Unit/Length	Quantity
Hilti	EDNI 19P8	0	40
Metal Screw	#10 Drivall	0	4178
Clip Angle 1	L-2x3x3x0.104	0	20
B1	250S162-68(50)	25'-10 7/8"	20
T1	550S162-68(50)	28'-0"	20
Web #1 18	250S162-68(50)	1'-10 3/16"	20
Web #2 17	250S162-68(50)	1'-10 3/4"	20
Web #3 16	250S162-68(50)	1'-10 13/16"	20
Web #4 15	250S162-68(50)	1'-10 13/16"	20
Web #5 14	250S162-68(50)	1'-10 13/16"	20
Web #6 13	250S162-68(50)	1'-10 13/16"	20
Web #7 12	250S162-68(50)	1'-10 13/16"	20
Web #8 11	250S162-68(50)	1'-10 13/16"	20
Web #9 10	250S162-68(50)	1'-10 13/16"	20
Web Track #1 18	250T125-68(50)	1'-10 3/16"	20
Web Track #2 17	250T125-68(50)	1'-10 3/4"	20
Web Stiffener (ws)	250T125-33(33)	2 5/16"	20
B_Chld Lateral Brace	250S162-33(33)	20'-3"	14
B_Chld Diagonal Brace	250S162-33(33)	6'-2 1/4"	24

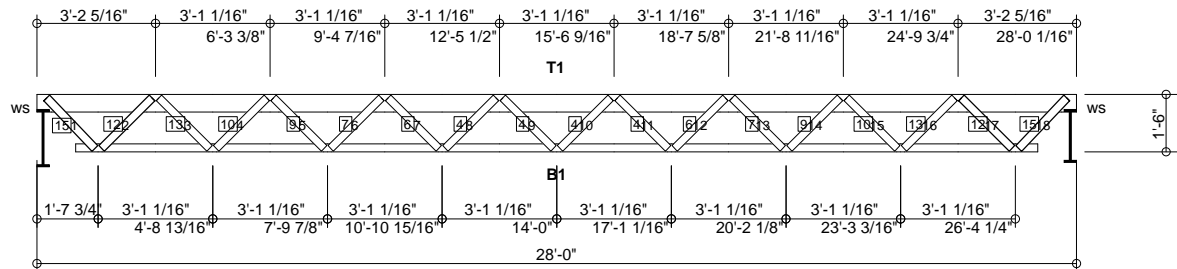
### GENERAL NOTES

- Number of fasteners noted in chart installed on each end of Web
- When connecting plates to chord or web members, fasteners must pass through the plate and member. If a joint connection has fasteners passing through the web, connector plate and chord, the fastener may be counted as part of the required number of fasteners for that joint.
- Minimum connector spacing (center to center or free edge) = 5/8"
- Truss connector type - #10 Drivall (Grabber)

Number of Trusses = 10 each
Chord Cut Type = Square Cut
Truss Spacing = 4'-0"
Number of Plys = 1
Weight per Truss = 172.7 lbs (per ply)



Support	Connector Type	Qty	Fastener Chord	Qty	Fastener Support	Qty
Left	L-2x3x3x0.104	1	#10 Drivall	4	EDNI 19P8	2
Right	L-2x3x3x0.104	1	#10 Drivall	4	EDNI 19P8	2



□ denotes Added Track  
 2 denotes number of fasteners @ each end of member (web or chord)  
 4 4 denotes number of chord-plate fasteners

Scale: 3/16" = 1'-0"



### Rusk Component and Design

11357 Billings Ave  
Lafayette, CO 80026  
(303) 828-5747

### Bar Joist Equivalent

Lafayette, CO

Truss D&E, V23.05  
Date: 10-11-2013  
Time: 13:46  
Designer: BJR  
File: BJL18-48-28  
Job Number: BarJoist

This document contains information proprietary to Rusk Component and Design and may not be used or reproduced without prior written consent. Contents subject to change without notice.

BJL18-48-28

Frame Fabrication Dwg