

Connection	Section	Length	Axial	Int.	Fastener	Pa	Req.
BC #1	250S162-68(50)	27.79	19.11C	0.81	#10 Drivall	0.000	0
TC #1	550S162-68(50)	27.79	19.21C	0.99	#10 Drivall	0.000	0
Web # 1 18	250S162-68(50)+T	1.63	6.46T	0.95	#10 Drivall	0.444	15
Web # 2 17	250S162-68(50)+T	1.68	4.99T	0.93	#10 Drivall	0.444	12
Web # 3 16	250S162-68(50)	1.68	5.53C	0.77	#10 Drivall	0.444	13
Web # 4 15	250S162-68(50)	1.68	4.42T	0.92	#10 Drivall	0.444	10
Web # 5 14	250S162-68(50)	1.68	3.86C	0.54	#10 Drivall	0.444	9
Web # 6 13	250S162-68(50)	1.68	2.73T	0.57	#10 Drivall	0.444	7
Web # 7 12	250S162-68(50)	1.68	2.52C	0.35	#10 Drivall	0.444	6
Web # 8 11	250S162-68(50)	1.68	1.49T	0.31	#10 Drivall	0.444	4
Web # 9 10	250S162-68(50)	1.68	1.20C	0.17	#10 Drivall	0.444	4
Web Stiffener (ws)	250T125-33(33)	0.19	3.40C	0.92	#10 Drivall	0.175	19
BC Lateral Brace	250S162-33(33)	4.00	0.18C	0.09	#10 Drivall	0.234	1
BC Diagonal Brace	250S162-33(33)	6.88	0.31C	0.36	#10 Drivall	0.234	2

Connection	Simpson	each	Load	Uplift/Shear	Fastener	Pa	Req.
Truss Chord	L-2x3x3x0.104	1	0.35		#10 Drivall	0.444	4
Steel Beam				0.35	EDNI 19P8	0.455	2
Truss Chord	L-2x3x3x0.104	1	0.35		#10 Drivall	0.444	4
Steel Beam				0.35	EDNI 19P8	0.455	2

GENERAL NOTES

1. Trusses require lateral bracing. See Truss Layout and Detail sheets.
2. Top Chord continuously sheathed.
3. Number of fasteners noted in chart installed on each end of Web
4. Allowable fastener values based on LGSEA Research Note No. 1-00 and Grabber Chart.
5. (ws) denotes web stiffener required at support.
6. Member design based on sections in RCD-BarJoist Library.

Maximum Deflections

Vertical	1.140 in (L / 295)
Horizontal	0.138 in
Vertical	0.405 in (L / 830) [Dead Load Only]
Vertical	0.732 in (L / 459) [Live Load Only]

Support Reactions

Support Reactions	Down	Uplift*	Horizontal	Bearing
Left	3.40 {3.40}	-0.35 [-1.06]	0.00	4.00
Right	3.40 {3.40}	-0.35 [-1.06]	0.00	4.00

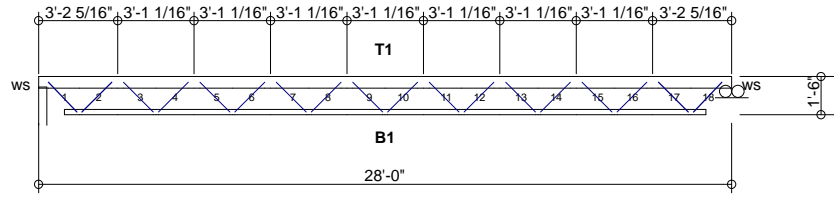
* Uplift Load Combination (Truss to Support Connection Only): 0.6Dead + 1.0Wind

{ } Denotes 'Dead+Live Only'

[] Denotes 'Wind Only' Uplift Reaction

DESIGN DATA

Number of Trusses = 10 each
 Plate Style : Out-Of-Plane
 Eave Height : 10.00 ft (top of wall)
 Bearing : 4 in
 Spacing : 4.00 ft
 Dead Load : 10.00 psf (top chord)
 Dead Load : 10.00 psf (bottom chord)
 Live Load : 40.00 psf (top chord)
 Live Load : 0.00 psf (bottom chord)
 Snow Load : 43.00 psf (ground)
 Snow Load : 30.10 psf (design) [Is =1.00, Ce = 1.00]
 Wind Load : 14.96 psf (design) [Iw = 1.00]
 Wind Speed : 90 mph (Exposure C)
 Open Category: E
 Topography (Kz):1
 Building Category: (2) General
 Seismic Coefficient: 0.044



Per AISI S100-2007		Actual			Allowable			Ratio
Member	Section	Po	Vo	Mo	Pa	Va	Ma	
Bottom Chord	2-250S162-68(50)	19.11T	0.01	2.95	28.35	5.80	21.38	0.81
Top Chord	2-550S162-68(50)	19.21C	0.00	17.28	27.03	10.61	61.74	0.99
Web	1-250S162-68(50)	0.57T	0.00	11.91	29.56	5.80	15.73	0.95

International Building Code 2009: PASSED
 Design Method - (ASD)
 Component Wind Pressure Design (End)

= denotes Added Track



Rusk Component and Design
 11357 Billings Ave
 Lafayette, CO 80026
 (303) 828-5747

Bar Joist Equivalent
 Lafayette, CO

Truss D&E, V23.05
 Date: 10-11-2013
 Time: 13:46
 Designer: BJR
 File: BJL18-48-28
 Job Number: BarJoist

BJL18-48-28