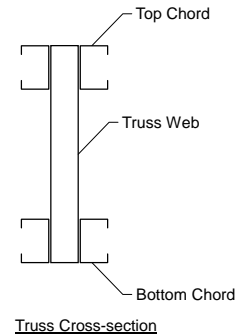


MATERIAL CUT LIST	Material	Unit/Length	Quantity
Hilti	EDNI 19P8	0	40
Metal Screw	#10 Drivall	0	2464
Clip Angle 1	L-2x3x3x0.075	0	20
B1	250S162-68(50)	22'-5 5/16"	20
T1	250S162-68(50)	25'-0"	20
Web #1 14	362S162-68(50)	1'-7 1/8"	20
Web #2 13	250S162-68(50)	1'-10 5/8"	20
Web #3 12	250S162-68(50)	1'-10 5/8"	20
Web #4 11	250S162-68(50)	1'-10 5/8"	20
Web #5 10	250S162-68(50)	1'-10 5/8"	20
Web #6 9	250S162-68(50)	1'-10 5/8"	20
Web #7 8	250S162-68(50)	1'-10 5/8"	20
Web Stiffener (ws)	250T125-33(33)	2 5/16"	20
B_Chd Lateral Brace	250S162-33(33)	27'-3"	6
B_Chd Diagonal Brace	250S162-33(33)	8'-0 7/8"	21

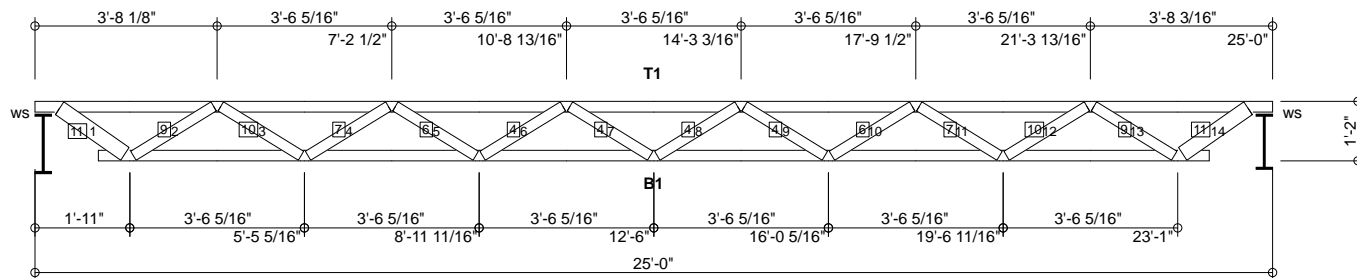
GENERAL NOTES

1. Number of fasteners noted in chart installed on each end of Web
2. When connecting plates to chord or web members, fasteners must pass through the plate and member. If a joint connection has fasteners passing through the web, connector plate and chord, the fastener may be counted as part of the required number of fasteners for that joint.
3. Minimum connector spacing (center to center or free edge) = 5/8"
4. Truss connector type - #10 Drivall (Grabber)

Number of Trusses = 10 each
 Chord Cut Type = Square Cut
 Truss Spacing = 3'-0"
 Number of Plys = 1
 Weight per Truss = 112.5 lbs (per ply)



Support	Connector Type	Qty	Fastener Chord	Qty	Fastener Support	Qty
Left	L-2x3x3x0.075	1	#10 Drivall	2	EDNI 19P8	2
Right	L-2x3x3x0.075	1	#10 Drivall	2	EDNI 19P8	2



2 denotes number of fasteners @ each end of member (web or chord)
 4 4 denotes number of chord-plate fasteners

Scale: 1/4" = 1'-0"



Rusk Component and Design

11357 Billings Ave
 Lafayette, CO 80026
 (303) 828-5747

Bar Joist Equivalent

Lafayette, CO

Truss D&E, V23.05
 Date: 10-11-2013
 Time: 09:57
 Designer: BJR
 File: BJK14-36-25
 Job Number: BarJoist

This document contains information proprietary to Rusk Component and Design and may not be used or reproduced without prior written consent. Contents subject to change without notice.

BJK14-36-25

Frame Fabrication Dwg