

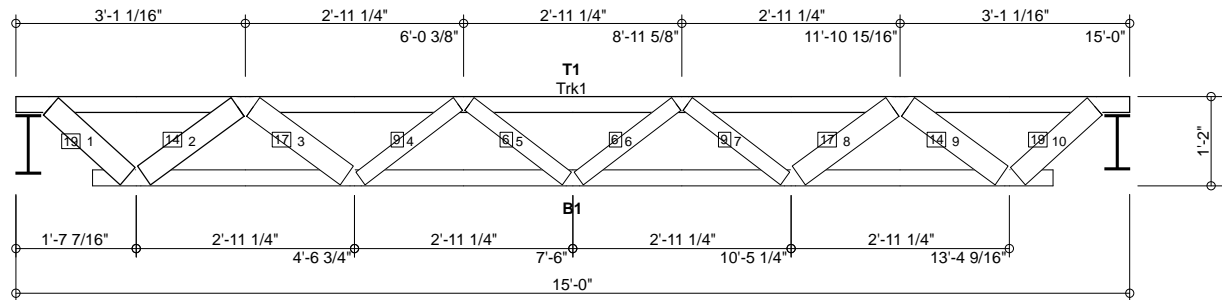
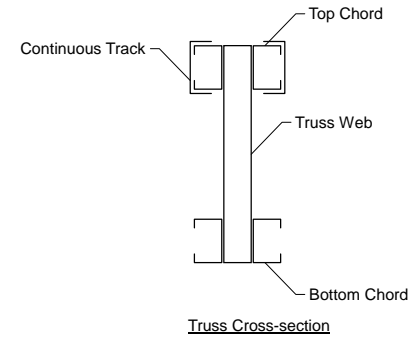
MATERIAL CUT LIST	Material	Unit/Length	Quantity
Hilti	EDNI 19P8	0	40
Metal Screw	#10 Drivall	0	3134
Clip Angle 1	L-2x3x3x0.12	0	20
B1	250S162-68(50)	12'-11 1/4"	20
T1	250S162-68(50)	15'-0"	20
TC Track #T1	250T125-68(50)	15'-0"	20
Web #1 10	362S162-97(50)	1'-4 9/16"	20
Web #2 9	362S162-97(50)	1'-6 9/16"	20
Web #3 8	362S162-68(50)	1'-6 9/16"	20
Web #4 7	250S162-68(50)	1'-7 5/8"	20
Web #5 6	250S162-68(50)	1'-7 5/8"	20
B_Chld Lateral Brace	250S162-68(50)	20'-3"	28
B_Chld Diagonal Brace	250S162-68(50)	10'-4"	48

Support	Connector Type	Qty	Fastener Chord	Qty	Fastener Support	Qty
Left	L-2x3x3x0.12	1	#10 Drivall	4	EDNI 19P8	2
Right	L-2x3x3x0.12	1	#10 Drivall	4	EDNI 19P8	2

GENERAL NOTES

- Number of fasteners noted in chart installed on each end of Web
- When connecting plates to chord or web members, fasteners must pass through the plate and member. If a joint connection has fasteners passing through the web, connector plate and chord, the fastener may be counted as part of the required number of fasteners for that joint.
- Minimum connector spacing (center to center or free edge) = 5/8"
- Truss connector type - #10 Drivall (Grabber)

Number of Trusses = 10 each
Chord Cut Type = Square Cut
Truss Spacing = 10'-0"
Number of Plys = 1
Weight per Truss = 127.2 lbs (per ply)



\equiv denotes Added Track
 $\begin{matrix} 2 \\ | \\ 2 \end{matrix}$ denotes number of fasteners @ each end of member (web or chord)
 $\begin{matrix} 4 \\ | \\ 4 \end{matrix}$ denotes number of chord-plate fasteners

Scale: 3/8" = 1'-0"



Rusk Component and Design

11357 Billings Ave
Lafayette, CO 80026
(303) 828-5747

Bar Joist Equivalent

Lafayette, CO

Truss D&E, V23.05
Date: 10-06-2013
Time: 10:15
Designer: BJR
File: BJK14-120-15
Job Number: BarJoist

This document contains information proprietary to Rusk Component and Design and may not be used or reproduced without prior written consent. Contents subject to change without notice.

BJK14-120-15

Frame Fabrication Dwg