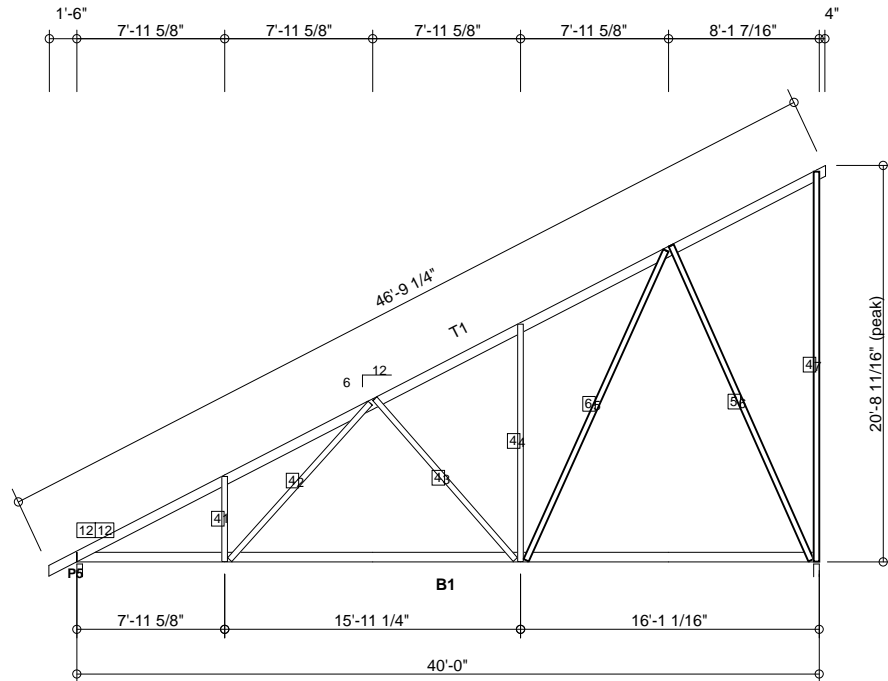
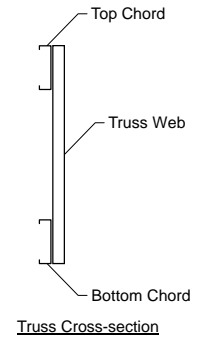


MATERIAL CUT LIST	Material	Unit/Length	Quantity
Metal Screw	#12 Drivall	0	1340
Metal Screw	#10 Drivall	0	1310
Simpson	MTS12	0	10
Simpson	CS18x16L	0	10
B1	600S162-97(50)	40'-0"	10
T1	600S162-54(50)	47'-0 1/4"	10
Web #1	362S162-54(50)	4'-5 3/8"	10
Web #2	362S162-54(50)	11'-1 3/4"	10
Web #3	362S162-54(50)	11'-3 3/4"	10
Web #4	362S162-54(50)	12'-5"	10
Web #5	362S162-54(50)	17'-10 5/16"	10
Web #6	362S162-54(50)	18'-1 3/16"	10
Web #7	362S162-54(50)	20'-4 5/8"	10
Web T-Brace #5	362S162-54(50)	17'-10 5/16"	10
Web T-Brace #6	362S162-54(50)	18'-1 3/16"	10
Web T-Brace #7	362S162-54(50)	20'-4 5/8"	10

GENERAL NOTES

- Number of fasteners noted in chart installed on each end of Web
- When connecting plates to chord or web members, fasteners must pass through the plate and member. If a joint connection has fasteners passing through the web, connector plate and chord, the fastener may be counted as part of the required number of fasteners for that joint.
- Minimum connector spacing (center to center or free edge) = 3/4"
- Truss connector type - #12 Drivall (Grabber)

Number of Trusses = 10 each
Chord Cut Type = Square Cut
Truss Spacing = 2'-0"
Number of Plys = 1
Weight per Truss = 438.7 lbs (per ply)



| denotes Web + T-Brace
 | 2 | denotes number of fasteners @ each end of member (web or chord)
 | 4 | 4 | denotes number of chord-plate fasteners

Scale: 3/32" = 1'-0"



Rusk Component and Design

11357 Billings Ave
Lafayette, CO 80026
(303) 828-5747

Roof Trusses

Lafayette, Co

Truss D&E, V25.011
Date: 04-26-2015
Time: 10:50
Designer: BJR
File: M-4-40
Job Number: RoofTruss

This document contains information proprietary to Rusk Component and Design and may not be used or reproduced without prior written consent. Contents subject to change without notice.

M-4-40

Fabrication Drawing