

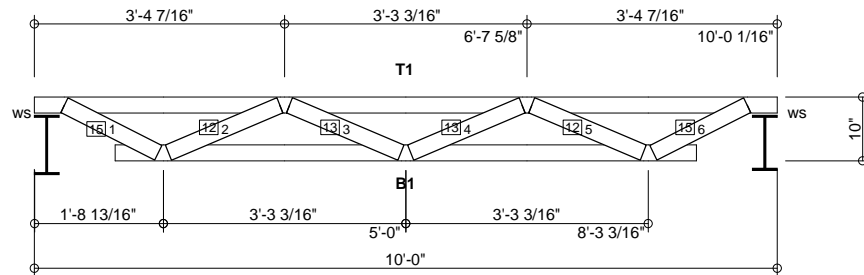
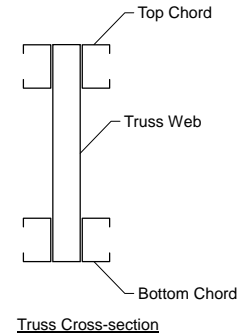
MATERIAL CUT LIST	Material	Unit/Length	Quantity
Hilti	EDNI 19P8	0	40
Metal Screw	#10 Drivall	0	2680
Clip Angle 1	L-2x3x3x0.12	0	20
B1	250S162-54(50)	7'-9 7/8"	20
T1	250S162-54(50)	10'-0"	20
Web #1 6	250S162-68(50)	1'-4 15/16"	20
Web #2 5	250S162-68(50)	1'-7 1/2"	20
Web #3 4	250S162-68(50)	1'-7 1/2"	20
Web Track #1 6	250T125-68(50)	1'-4 15/16"	20
Web Track #2 5	250T125-68(50)	1'-7 1/2"	20
Web Track #3	250T125-68(50)	1'-7 1/2"	10
Web Stiffener (ws)	250T125-33(33)	2 5/16"	20
B_Chld Lateral Brace	250S162-68(50)	20'-3"	16
B_Chld Diagonal Brace	250S162-68(50)	9'-0 13/16"	30

Support	Connector Type	Qty	Fastener Chord	Qty	Fastener Support	Qty
Left	L-2x3x3x0.12	1	#10 Drivall	2	EDNI 19P8	2
Right	L-2x3x3x0.12	1	#10 Drivall	2	EDNI 19P8	2

### GENERAL NOTES

- Number of fasteners noted in chart installed on each end of Web
- When connecting plates to chord or web members, fasteners must pass through the plate and member. If a joint connection has fasteners passing through the web, connector plate and chord, the fastener may be counted as part of the required number of fasteners for that joint.
- Minimum connector spacing (center to center or free edge) = 5/8"
- Truss connector type - #10 Drivall (Grabber)

Number of Trusses = 10 each  
 Chord Cut Type = Square Cut  
 Truss Spacing = 8'-0"  
 Number of Plys = 1  
 Weight per Truss = 59.9 lbs (per ply)



ws denotes Added Track  
 1/2 denotes number of fasteners @ each end of member (web or chord)  
 4/4 denotes number of chord-plate fasteners

Scale: 3/8" = 1'-0"



### Rusk Component and Design

11357 Billings Ave  
 Lafayette, CO 80026  
 (303) 828-5747

### Bar Joist Equivalent

Lafayette, CO

Truss D&E, V23.05  
 Date: 10-11-2013  
 Time: 08:57  
 Designer: BJR  
 File: BJK10-96-10  
 Job Number: BarJoist

This document contains information proprietary to Rusk Component and Design and may not be used or reproduced without prior written consent. Contents subject to change without notice.

BJK10-96-10

Frame Fabrication Dwg